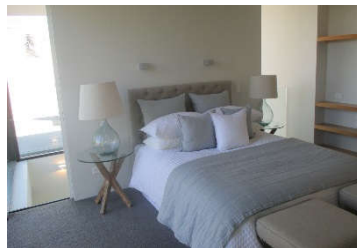


# Lintrathen Gardens



Designed with the intention of articulating the complex interplay between natural elements and contemporary form, Lintrathen Gardens is a refined example of modernist architecture by Christchurch firm, Sheppard and Rout.

The development comprises of eight townhouses and two standalone residences on a large river-side site in Fendalton. With an emphasis on quality of design, materials and finish, the spacious three-bedroom townhouses are interspersed amongst notable protected trees and a short stroll to the river with its beautifully landscaped rest area. The combination of an unerring eye for detail combined with faultless execution has resulted in well-proportioned, interconnecting spaces that will make these contemporary properties just as desirable in 20 years as they are today.



Engenium provided structural engineering design services for this residential development, with the design incorporating raft foundation to avoid piling and bracing incorporated in the wall with steel structure to provide maximum window and area and open plan ground floor living. Exterior cladding comprises of Rockcote Integra and Cedar cladding and garage doors. Floating stone patios lead through to the large picture windows and doors into modern living areas and white designer kitchens with black granite finishes and European appliances. Full insulation, double glazing and discreet ducted reverse cycle air conditioning units ensure these homes are energy efficient and comfortable all year-round. Built to exacting standards with a tight time-frame and on an equally tight site, this project is a testament to the skills of the construction team at Contract Construction.

## OVERVIEW

### Address

*Street:* 140 Glandovey Road  
*Suburb:* Fendalton  
*City:* Christchurch

### Consultants

*Engineer:* Engenium  
*Architect:* Sheppard & Rout

### Project Details

*Value Band:* \$5-10m  
*Size:* 2087 m2  
*Stories:* Two  
*Category:* Residential Apartments  
*Type:* New Build  
*Finish Date:* Dec 2017  
*Build Time:* 20 months

