

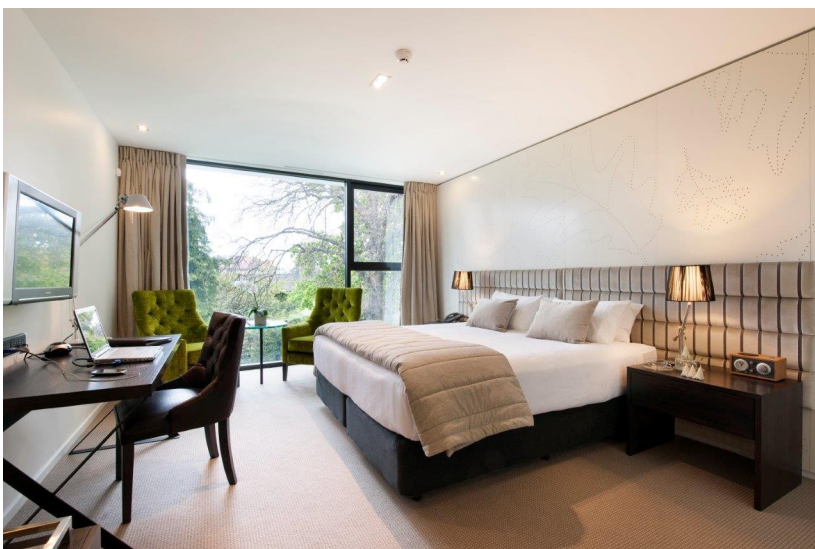
The George Hotel- Refurbishment



This contract was to refurbish 36 rooms throughout 3 floors and to various levels ranging from Executive suites, Executive Twins through to King suites. The contract period was extremely tight so the project management was critical, and to compound matters various levels remained in use necessitating careful programming of trades that required concrete cutting, skill saws, ramset guns and dyna-drills.

The George is now a 5-star rated hotel and has state of the art power monitoring and communication installations and has been awarded New Zealand's leading "Boutique Hotel".

Our company is proud to have completed these contracts to such a high standard and under demanding timeframes.



OVERVIEW

Address

Street: 50 Park Terrace
Suburb: Central
City: Christchurch

Consultants

Engineer: n/a
Architect: Warren & Mahoney

Project Details

Value Band: \$1-2m
Size: 1400 m2
Stories: Three
Category: Interior Fit-out
Type: Accommodation
Finish Date: Aug 2009
Build Time: 2 months

